

MEDIUM LEVEL ORDER PICKER 0.5T



- High volume order picking in a warehouse environment;
- Max Platform height: 4.80m - Picking height 6.3m;
- Truck Size 1590x1500x800, turning radius (1385), suitable for narrow aisles in the warehouse;
- Strong and steady;
- AGM Battery (maintenance free), Large Lead-Acid battery as option. Simple Battery exchange.

Model designation				JX1	JX1	JX1
Drive				Electric	Electric	Electric
Load capacity	Q	kg		363	363	363
Wheelbase	y	mm		1150	1150	1256
Service weight		kg		1160	1340	1530
Height of overhead guard (cabin)	h6	mm		1590	2120	2120
Lift height	h3	mm		4030	4930	5710
Height, mast extended	h4	mm		4540	5970	6750
Overall length	l2	mm		1500	1500	1610
Overall width	b1/b2	mm		800	800	876
Stand height, elevated	h12	mm		3200	4100	4880
Turning radius	Wa	mm		1385	1385	1450
Travel speed, laden/unladen		km/h		5.5/5.5	5.5/5.5	5.5/5.5
Lifting speed, laden/unladen		m/s		0.17/0.21	0.17/0.21	0.17/0.21
Lowering speed, laden/unladen		m/s		0.35/0.26	0.35/0.26	0.35/0.26
Drive motor rating S2 60 min		kW		1.7	1.7	1.7
Battery voltage/nominal capacity		V/Ah		24V224AH	24V224AH	24V224AH



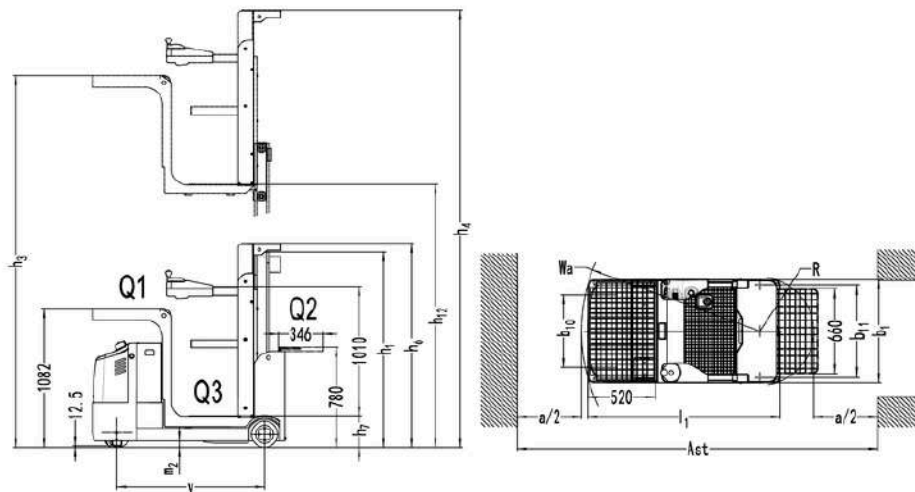
YOUR WORKING AT HEIGHT PARTNER

Distinguishing mark	Model designation			JX1	JX1	JX1
	Drive			Electric	Electric	Electric
	Operator type			Order-picker	Order-picker	Order-picker
	Load capacity	Q	kg	363	363	363
	Wheelbase	y	mm	1150	1150	1256
Service weight	Service weight		kg	1242	1340	1646
	Axle loading, laden front/rear		kg	644/1096	740/1100	837/1309
	Axle loading, unladen front/rear		kg	475/767	520/820	670/1036
Tyres/chassis	Tyre type			Polyurethane/Solidrubber	Polyurethane/Solidrubber	Polyurethane/Solidrubber
	Tyre size, front			φ230*75	φ230*75	φ230*75
	Tyre size, rear			φ204*76	φ204*76	φ204*76
	Additional wheels (castor wheels)		mm	φ74*48	φ74*48	φ74*48
	Wheels, number front/rear (x=drive wheels)		mm	1x, 2/2	1x, 2/2	1x, 2/2
	Tread width, front	b ₁₀	mm	555	555	615
	Tread width, rear	b ₁₁	mm	740	740	784
Dimensions	Retracted mast height	h ₁	mm	1510	2080	2090
	Lift height	h ₂	mm	4030	4930	5710
	Height, mast extended	h ₃	mm	4540	5970	6750
	Height of overhead guard (cabin)	h ₄	mm	1590	2120	2120
	Seat height/standing height	h ₅	mm	250	250	250
	Stand height, elevated	h ₁₂	mm	3200	4100	4880
	Overall length	l ₁	mm	1500	1500	1610
	Overall width	b ₁ /b ₂	mm	823	800	876
	Ground clearance, center of wheelbase	m ₂	mm	50	50	50
	Turning radius	W _a	mm	1385	1385	1450
Performance data	Travel speed, laden/unladen		km/h	5.5/5.5	5.5/5.5	5.5/5.5
	Lifting speed, laden/unladen		m/s	0.17/0.21	0.17/0.21	0.17/0.21
	Lowering speed, laden/unladen		m/s	0.35/0.26	0.35/0.26	0.3/0.26
	Max. gradeability, laden/unladen		%	0	0	0
Electric-engine	Service brake			Electromagnetic	Electromagnetic	Electromagnetic
	Drive motor rating S2 60 min		kW	1.6	1.6	1.6
	Lift motor rating at S3 15%		kW	2.2	2.2	2.2
	Battery voltage/nominal capacity		V/Ah	24V/224AH	24V/224AH	24V/224AH
	Battery weight		kg	163	163	163
ElecDrive/lift mechanism/engine	Type of drive control			AC	AC	AC
Addition data	Steering design			Electronic	Electronic	Electronic
	Sound pressure level at the driver's ear		dB(A)	74	74	74
	Charger output current		A	25	25	25

If there are improvements of technical parameters or configurations, no further notice will be given.
The diagram shown may contain non-standard configurations.



YOUR WORKING AT HEIGHT PARTNER



Option

No.	Optional items	JX1(3200, 4100)	JX1(4800)
2.1	Load wheel type	●Single	●Single
2.2	Load wheel material	●Rubber	●Rubber
2.3	Drive wheel material	●PU	●PU
2.7	Battery capacity	●No○224AH○210AH○270AH○205AH	●No○224AH○280AH○360AH○205AH
2.8	Charger	●No○24V-25A Integrated○24V-40A External ○24V-27.1A Integrated	●No○24V-25A Integrated○24V-50A External ○24V-27.1A Integrated
2.9	Battery indicator	●With hourmeter	●With hourmeter
2.12	Safe hook	●No○Yes and not customized	●No○Yes and not customized
2.13	Traction pin	●No○Yes and not customized	●No○Yes and not customized
2.14	Electrostatic chain	●No	●No
3.3	Castor wheels	●Yes and not customized	●Yes and not customized
3.4	Water auto-filling system	●No	●No
3.7	Warning lamp	●Front and rear warning light ○Front blue light + rear warning light ○Rear blue light + front warning light	●Front and rear warning light ○Front blue light + rear warning light ○Rear blue light + front warning light
3.12	Buzzer	●Drop buzzer, door alarm buzzer, dip buzzer ○Running buzzer○Reversing buzzer	●Drop buzzer, door alarm buzzer, dip buzzer ○Running buzzer○Reversing buzzer
3.18	Guide wheel	●No○Yes and not customized	●No○Yes and not customized
3.19	USB interface	●No○Yes and not customized	●No○Yes and not customized
4.1	Battery side pull function	●Yes and not customized	●Yes and not customized
4.7	Overhead guard	●No	●No
5.1	Battery side pull attachment	●No○Yes and not customized	●No○Yes and not customized
4.6	Inclinaison fourches Avant et arrière	●Yes	●Yes
5.1	Accessoire sortie latérale batterie	●No○Side pull trolley	●No○Side pull trolley

Note: ●Standard ○Optional - Inconformity